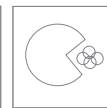
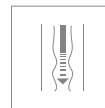


## Technical sheet

Product **C-L**  
**Emulsion**



CELLULITE

LIPOLYTIC  
DRAININGPOOR  
CIRCULATION

Format



200ml.



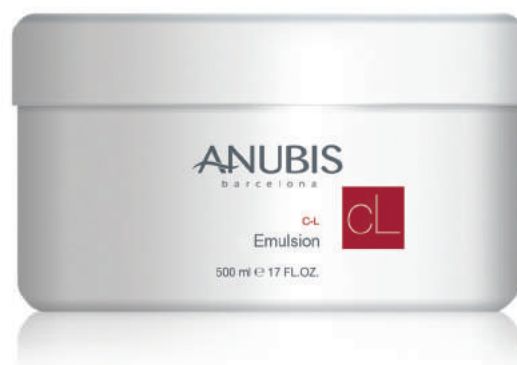
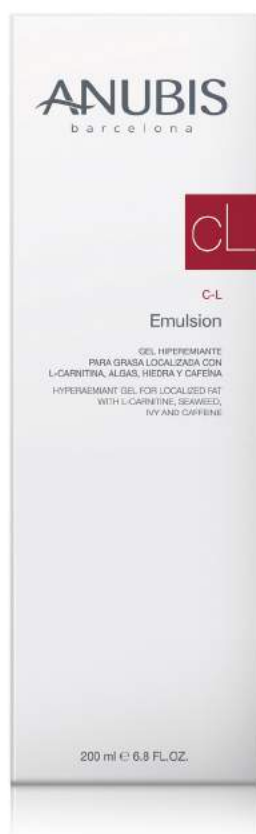
500 ml.

Description Hyperaemic gel for localised fat

Reference

50040200

50040500



## Main active ingredients

<b>L-Carnitine</b>	Amino acid that promotes the burning of fat. The amino acid carnitine helps to accelerate fat oxidation favoring its elimination when it, in a normal process, would tend to remain or be eliminated very slowly from our cells and bloodstream.
<b>Caffeine</b>	Active containing an alkaloid derived from the methyl-xanthine that has significant vasoconstrictor effect and stimulating properties on blood and lymphatic circulation, promoting drainage of liquids.
<b>Brown Seaweed</b> (FUCUS and PELVETIA CANICULATA)	It has moisturising and film-forming properties. It also has calming properties due to its content of Fucoidan, capable of inhibit the inflammatory cascade effects that usually cause allergies and tissue damage. The seaweed extract contains organic iodine, which mobilizes liquids retained in this delicate area, stimulates blood circulation and removes toxins. Such decongestants and the anti-edema of seaweed extract allow exceptional lipolytic activity, activates cell metabolism and thus helps to remove accumulated toxic elements.
<b>Ruscus</b>	Due to the synergistic action of its main components ( saponins and flavonoids ), ruscus is considered an venotonic component , which stimulates the peripheral circulation. Studies have shown that the ruscogenine and flavonoids that it contains, have properties that reduce capillary permeability and increase vascular resistance.
<b>Ivy</b>	With regenerating and healing properties of skin. It contains $\beta$ -Hederagenin that stimulates contraction and dilation of blood vessels, stimulating microcirculation and oxygenating the skin.
<b>Methyl Nicotinate</b>	With hyperaemic action, it is an alkaloid belonging to the vitaminic group of B complex, has a vasodilatory effect when applied to the skin, causing an increase of blood flow and local temperature. By increasing the blood flow in the area of application, the removal of metabolic products from inflammation is accelerated, favouring decongestion of the edema that together with the thermo active effect promotes the penetration of other active ingredients.

**Specifications** PARABEN FREE / MINERAL OILS FREE

Skin type	Results
For the treatment of cellulite and localized fat.	Thermo slimming gel with a heating effect. Stimulating , lipolitic and draining, with venotonic action, it helps to improve the oxygenation of tissues and to supply ideally actives principles to the skin.

How to use	Equipment	Frequency of use	Precautions
<ul style="list-style-type: none"> <li>• <b>Professional use:</b> To ensure the penetration of further actives, apply C-L EMULSION to the area to treat, and perform a massage until completely absorbed.</li> <li>• <b>Home use:</b> Apply C-L EMULSION to the area to treat, and perform a massage until completely absorbed.</li> </ul>	Not suitable for devices.	<ul style="list-style-type: none"> <li>• <b>Professional use:</b> Use whenever it is required by the professional, or within the established sessions protocol of RED SEAWEED.</li> <li>• <b>Home use:</b> Daily, or before the sport to enhance fat burning.</li> </ul>	<ul style="list-style-type: none"> <li>• This product may produce hyperemia (redness in the skin). So we do not recommend its use in circulatory problems.</li> <li>• After its application a minor redness is usually seen and felt together with a hot sensation.</li> <li>• Avoid mucous membrane contact and hand wash after its application.</li> </ul>

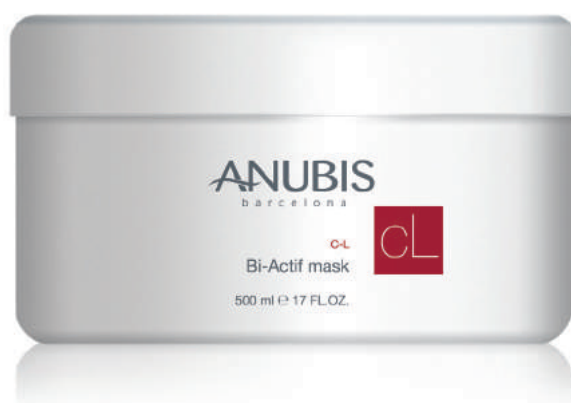
Product	C-L
	Bi-Actif Mask



500 ml.

## Reference

60020500



## Main active ingredients

### Ginkgo Biloba

There have been identified a variety of effects of the leaf extract of Ginkgo biloba. It contains various flavonoids and terpenoids with antioxidant action, protecting from the oxidation against free radicals, it also has a relaxing effect on vascular walls and an effect of improvement in blood flow or microcirculation.

### Camphor

Camphor extract has a stimulating effect on the microcirculation of the skin, it can increase or decrease the local temperature and decongest the tissues with edema.

### Methyl Nicotinate

With hyperaemic action, it is an alkaloid belonging to the vitaminic group of B complex, has a vasodilatory effect applied to the skin, causing an increase of blood flow and local temperature. By increasing the blood flow to the area of application, the removal of metabolic products from inflammation is accelerated, favouring decongestion of edema that, together with the thermo active effect, promotes the penetration of other active ingredients. It has a good absorption and degree of skin penetration, reaching therapeutic concentrations in the skin and in underlying areas.

### Menthol

With cooling and refreshing properties that stimulate the blood flow, which result to an circulation improvement.

## Specifications

PARABEN FREE / MINERAL OILS FREE

Skin type	Results
For the treatment of cellulite and localized fat. Indicated in volume reduction and firming treatments.	Mask with hot and cold effect. Activates microcirculation, drainage of retained fluids and tissue decongestion. Increases the penetration of products applied subsequently.

How to use	Equipment	Frequency of use	Precautions
<ul style="list-style-type: none"> <li><b>Professional use:</b> Apply BI-ACTIF MASK in the area to treat and cover with protective film for 15-20 minutes. Remove excess with a dry cloth and perfect the removal with a moistened cloth.</li> </ul>	Not suitable for devices.	<ul style="list-style-type: none"> <li><b>Professional use:</b> Use whenever it is required by the professional, or within the established protocol sessions of NATURAL SCULPT.</li> </ul>	<ul style="list-style-type: none"> <li>This product may produce hyperemia (redness in the skin). So we do not recommend its use in circulatory problems.</li> <li>After its application a minor redness is usually seen and felt together with a hot sensation.</li> <li>Avoid mucous membrane contact and hand wash after its application.</li> </ul>